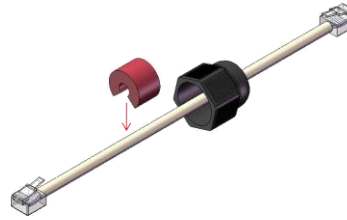


GM67X-CS-B or GM67X-CS-R Cable Assembly Instructions:

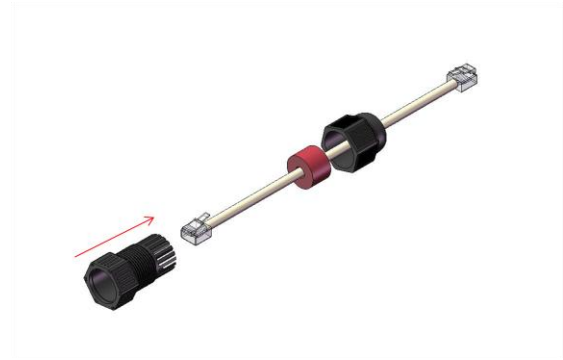
1. Take cat. 5 cable (provided by end user or Kycon can provide) and slide GM67X-CS-R or GM67X-CS-B seal nut onto cable as shown.



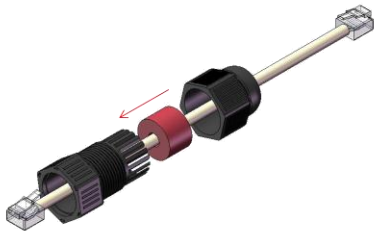
2. Spread GM67X-CS-R or GM67X-CS-B seal apart to place on cable.



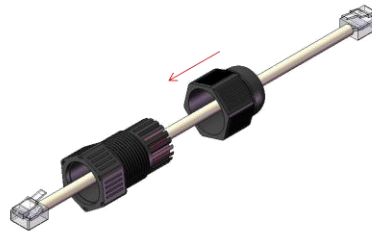
3. Slide the GM67X-CS-R or GM67X-CS-B body onto cable as shown.



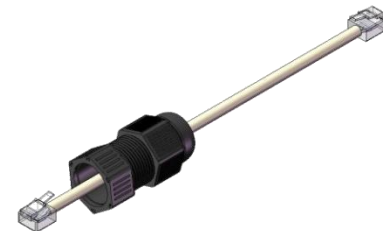
4. Slide the GM67X-CS-R or GM67X-CS-B seal into GM67X-CS-R or GM67X-CS-B body as shown.



5. Slide the GM67X-CS-R or GM67X-CS-B seal nut onto GM67X-CS-R or GM67X-CS-B body as shown then screw down seal nut enough to allow it to remain on body but not enough to restrict motion of GM67X-CS-R or GM67X-CS-B assembly.

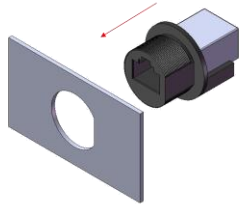


6. Repeat with other side if needed.

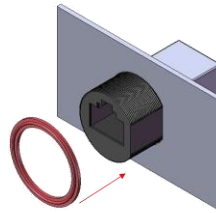


GM67X Assembly Instructions:

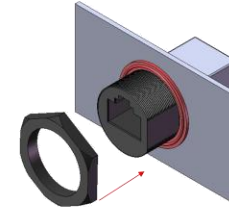
1. Insert GM67X-S-88 or GM67X-CBL-xxx-P body into panel.



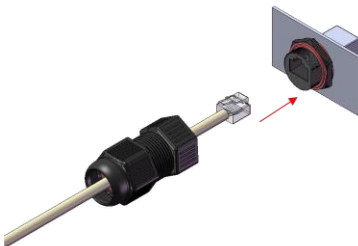
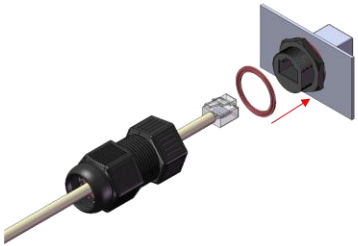
2. Insert GM67X-S-88 or GM67X-CBL-xxx-P gasket onto GM67X-S-88 or GM67X-CBL-xxx-P body.



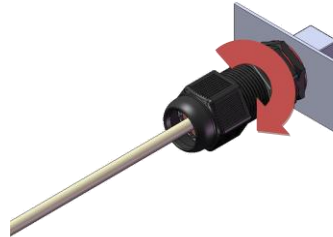
3. Screw nut onto GM67X-S-88 or GM67X-CBL-xxx-P body on outside of panel to secure part in place.



4. Insert cable side gasket onto GM67X-S-88 or GM67X-CBL-xxx-P body on outside of panel over the nut. Then attach completed cable side assembly to GM67X-S-88 or GM67X-CBL-xxx-P body.



5. Screw GM67X-CS-R or GM67X-CS-B body onto GM67X-S-88 or GM67X-CBL-xxx-P body.



6. Screw down GM67X-CS-R or GM67X-CS-B seal nut to secure seal around cable. Tighten enough to get a good seal on cable.

